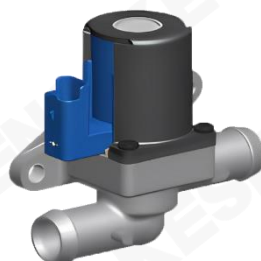


电磁水阀

Solenoid Water Valve



2位2通阀
2-Position, 2-Way Valve



2位3通阀
2-Position, 3-Way Valve

产品介绍 Product Description

电磁水阀主要用在汽车热管理水路侧，主要作用控制水路侧水路通断与水路的切换。

The solenoid water valve is mainly used in the thermal management waterway side of automobiles, and its main role is to control the waterway on and off, switch the waterway.

产品特征及优势 Feature and Benefits

- 采用膜片式设计将磁铁部件与介质隔离，使得电磁力更稳定；
The diaphragm design isolates the magnet parts from the medium, making the electromagnetic force more stable.
- 阀体采用精密注塑（PA66+GF30%），保证强度且重量更轻；
The valve body is precision injection molded (PA66+GF30%) to ensure strength and lighter weight.
- 接口采用通用设计，可使用快插式方式或卡箍方式连接；
The interface adopts universal design and can be connected by push-and-drop or clamp mode.
- 阀体流道流阻小，压损 < 1.5KPa.
The flow resistance of the valve body flow channel is small, and the pressure loss is < 1.5KPa.
- 采用橡胶密封内泄露极小（< 15ml/min）；
Extremely small leakage (<15ml/min) in rubber seal.

产品应用 Product Application

主要作用控制水路侧水路通断与水路的切换。

The main function is to control the waterway on and off, switch the waterway.

操作 Operation

基本原理 Basic Principle

ECU控制器给电磁线圈一个电信号，通过电磁线圈给电磁阀提供电磁力从而控制电磁阀开关。再通过电磁阀的通断，控制水路的通断。

The ECU controller gives an electrical signal to the solenoid coil, through which the solenoid valve is supplied with electromagnetic force to control the solenoid valve switch. The waterway is switched on and off by means of a solenoid valve.

2位2通电磁阀控制单个管路介质的通断；

2-position 2-way solenoid valve controls the on-off of a single pipeline medium;

2位3通电磁阀可控制介质在不同管路的切换；

The 2-position, 3-way solenoid valve controls the switching of media between lines;

包装选项 Packaging Options

可提供定制包装以满足任何需要，请联系KESENS技术部了解详情。
Custom packaging can be provided to meet any need, please contact KESENS Engineering for details.

技术参数 Technical Characteristics

项目ITEMS	参数PARAMETER
工作电压 Operating Voltage	DC 9~16V
电阻 Resistance	10.5±1Ω@20℃
环境温度 Ambient Temperature	-40℃~130℃
工作温度 Temperature Range	-40℃~100℃
爆破压力 Burst Pressure	> 800KPa
最大工作压力 Max Working Pressure	500KPa
流阻 Flow Resistance	<1.5kPa@15L/min
切换时间 Switch Time	< 2s
内漏 Internal Leakage	≤15 ml/min @ 30KPa
防护等级 Degree Of Protection	IP69
重量 Weight	160g
寿命次数 Lifetimes	>200k cycles

可根据客户需求定制产品，如有需求请联系我们。
Customized products available upon request. Contact us for details.

地址：浙江省嘉兴市经济技术开发区天枢路199号
Add: No. 199, Tianshu Road, Economic and Technological Development Zone, Jiaxing City, Zhejiang Province, China.
电话 (Tel) : 0573-82858999
邮箱 (E-mail) : info@kesens.com
网址 (Web) : www.kesens.com

