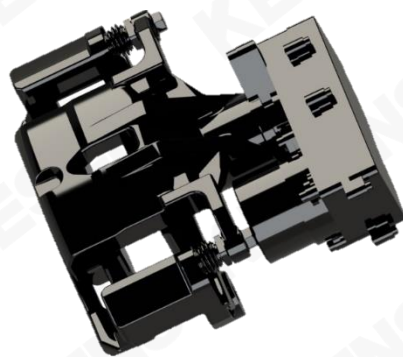


# 电子机械制动系统 (EMB)

Elector-Mechanical Braking System



## 产品介绍 Product Description

凯晟EMB 主要由踏板模拟器、EMB 执行器以及控制器等组成，通过控制执行器的夹紧力来实现对每个车轮制动力的独立控制，提高响应速度，结构简单，控制灵活，效率更高。

KESENS EMB completely abandons the hydraulic circuit. The actuator is directly driven by the motor to generate the clamping force, and it has the advantages such as reduced system volume and weight, faster braking response and higher control precision.

## 产品优势 Product Advantages

- 总成轻量化设计  
Assembly light-weight design
- 支持25/45/65KN  
Support 25/45/65KN
- 支持EHB/EPB功能  
Support EHB/EPB
- 支持各种自动驾驶制动接口  
Support ADAS brake interfaces